

# TALON BMS SPACER BLOCK KIT 1810211

THE BMS SPACER BLOCK KIT ONLY NEEDS TO BE USED WHEN RIGGING THE TALON ADAPTER BRACKET BETWEEN A BOBS MACHINE SHOP HYDRAULIC JACKPLATE AND OUTBOARD ENGINE. TALON ADAPTER BRACKETS CAN ALSO BE RIGGED BETWEEN THE JACKPLATE AND BOAT TRANSOM AND *WOULD NOT* REQUIRE THE BMS SPACER BLOCK KIT.

THE BMS SPACER BLOCK KIT PROVIDES AN ADDITIONAL 3/4" OF SPACING TO ALLOW THE TALON ADAPTER BRACKET TO BE FASTENED BETWEEN THE JACKPLATE AND OUTBOARD ENGINE.

## INSTALLATION : BOBS MACHINE SHOP HYDRAULIC JACKPLATES (ALL OFFSETS)

1. Support the outboard and remove the hardware that attaches the outboard to the jackplate.  
**(NOTE: THIS STEP CAN BE SKIPPED ON NEW INSTALLATIONS WHERE THE OUTBOARD IS NOT YET ATTACHED OR INSTALLED)**
2. Place the BMS spacers between the jackplate mounting surface and Talon adapter brackets. See diagram 1, back page.
3. Align the mounting holes and secure with the 1/2" hardware that was provided with the jackplate or outboard to mount the outboard.  
**(NOTE: CHECK THE LENGTH OF THE OUTBOARD MOUNTING HARDWARE TO MAKE SURE THAT THERE WILL BE ENOUGH THREAD ENGAGEMENT SINCE THE TALON BRACKET AND BMS SPACER KIT WILL**

ADD

**1-1/4" TO THE THICKNESS OR BOLT LENGTH)**

### LIMITED TWO-YEAR WARRANTY:

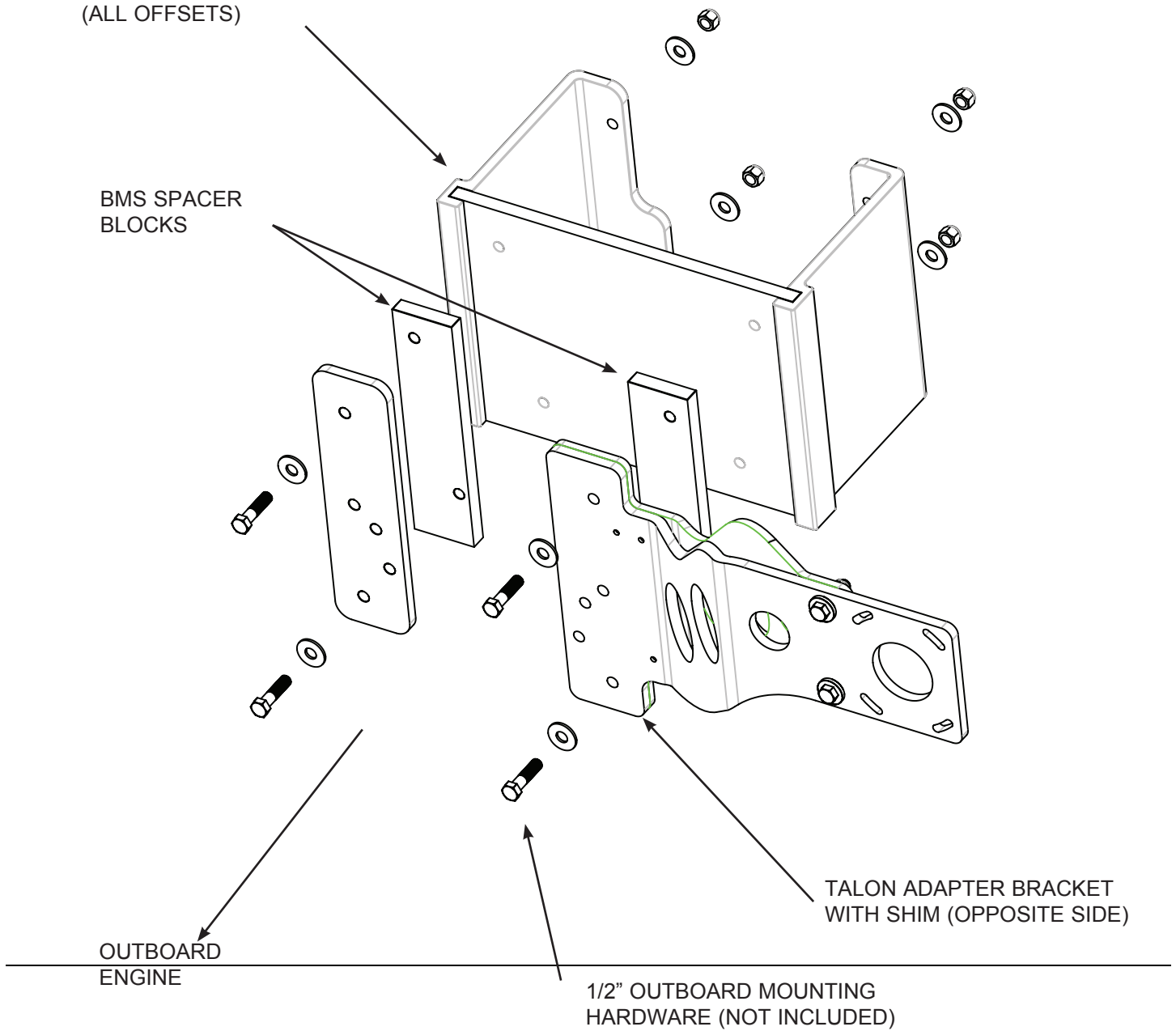
Johnson Outdoors Inc. warrants to the original purchaser that the purchaser's Talon adapter bracket is free from defects in materials and workmanship appearing within two (2) years after the date of purchase.

This warranty does NOT apply in the following circumstances: (1) when the product has been installed, combined, altered, adjusted, or handled in a manner other than according to the instructions furnished with the product; (2) when any defect, problem, loss, or damage has resulted from or caused by normal wear and tear, blemishes that do not affect the functionality of the product, or accidents, abuse, alteration, modification, misuse or improper care or maintenance in accordance with the instructions of the owner's manual for the motor.

**Diagram 1**

BOBS MACHINE SHOP  
HYDRAULIC JACKPLATES  
(ALL OFFSETS)

BMS SPACER  
BLOCKS



MOUNTING EXAMPLE: 3" OFFSET--STARBOARD SIDE MOUNT BRACKET WITH BMS SPACER BLOCK BETWEEN OUTBOARD AND JACK PLATE